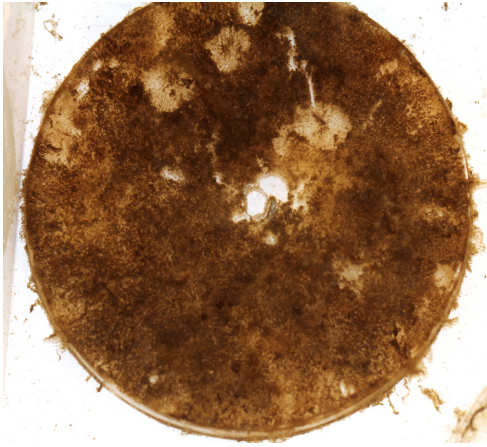


# What can you find growing on the discs?

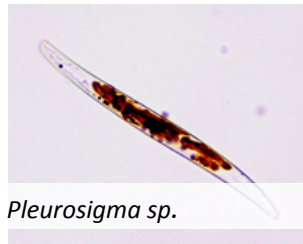
## Autotrophs / Primary Producers

### Microalgae/Diatoms

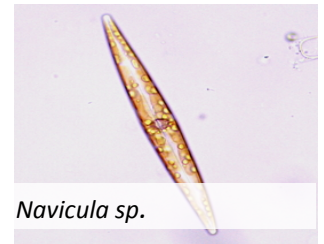
These are one of the first colonisers on the disc. Together with bacteria they form the biofilm on the surface of the disc. These are microscopic and usually grow as colonies, filaments or they can also be solitary. To the naked eye, they look like dirt on the disc. Scrape some of this „dirt“ and observe it under the microscope.



How diatoms may look like to the naked eye



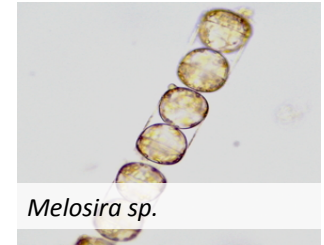
*Pleurosigma sp.*



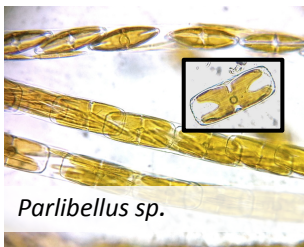
*Navicula sp.*



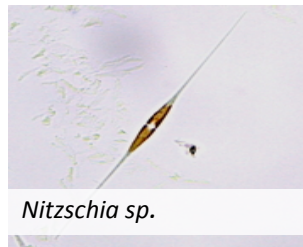
*Stauronella sp.*



*Melosira sp.*



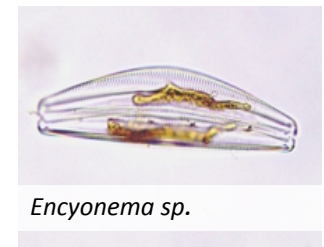
*Parlibellus sp.*



*Nitzschia sp.*



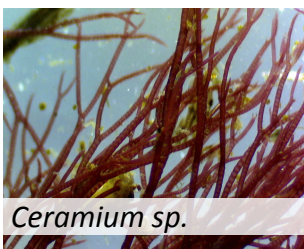
*Thalassiosira sp.*



*Encyonema sp.*

### Macroalgae

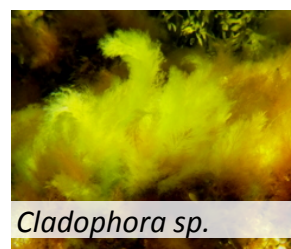
These can be red, green or brown algae visible with the naked eye. They can be leaf-like or filamentous. These grow normally on the upper disc sometimes on the sides.



*Ceramium sp.*



*Enteromorpha sp.*



*Cladophora sp.*



*Fucus serratus*