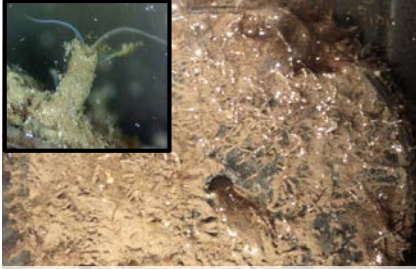


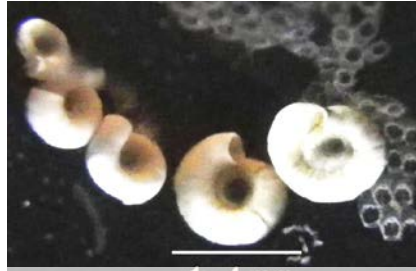
Organisms you may find on the discs: **Annelida**

Class Polychaeta



Polydora sp.

Common name: Bristleworm
Diet: Detritus
Recruitment: whole year
Others: also feed on plankton; tunnels into limestone, mussel shells, wood, etc.



Spirorbis spirorbis

Common name: Sinistral spiral tubeworm
Diet: Plankton and detritus
Recruitment: temperature dependent
Others: mainly marine; prefers fronds of macroalgae for settlement

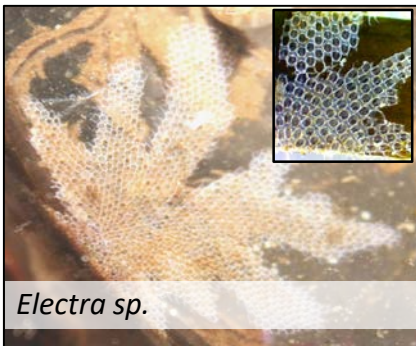


Nereis diversicolor

Common name: Ragworm
Diet: Diatoms, Seaweeds
Recruitment: early spring
Others: also eats dead macroalgae; exhibits diversity of feeding modes

Organisms you may find on the discs: **Bryozoans**

Class Gymnolaemata



Electra sp.

Common name: Moss animals, sea mats
Diet: mostly phytoplankton
Recruitment: Late summer to early autumn
Others: grow on many types of hard substrates including macroalgae fronds



Electra sp.



Membranipora membranacea

Common name: Sea mat
Diet: mostly phytoplankton
Recruitment: Late summer to early autumn
Others: grows fast to compensate for slug predation



Common name: Tube-dwelling bryozoan