

# Organisms you may find on the discs: Cnidarians

## Class Hydrozoa (The Hydroids)



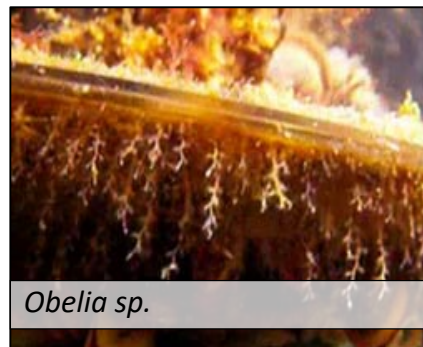
*Laomedea sp.*

**Common name:** Hydroid  
**Diet:** Zooplankton  
**Recruitment:** all year  
**Others:** found abundant on the sides of the discs; has no medusa stage



*Clava multicornis*

**Common name:** Club-headed hydroid  
**Diet:** zooplankton  
**Recruitment:** Summer  
**Others:** found on mussels and macroalgae; may vary in colour from white to pink



*Obelia sp.*

**Common name:** Zig-Zag wineglass hydroid  
**Diet:** carnivore and detritus feeder  
**Recruitment:** June  
**Others:** can settle on all types of hard substratum

## Class Anthozoa (Sea Anemones)



*Sagartiogeton sp.*

**Common name:** Sea anemone  
**Diet:** Fish, snails, crustaceans, zooplankton  
**Recruitment:** Summer  
**Others:** solitary; semi-sessile; they can move around slowly detaching their basal plates



*Diadumene leucolena*

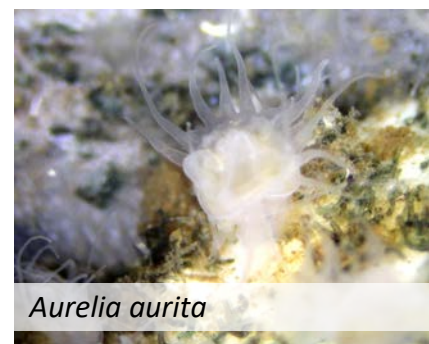
**Common name:** White anemone  
**Diet:** Fish, snails, crustaceans, zooplankton  
**Recruitment:** Summer  
**Others:** can be found associated with mussel shells; has a wide range of salinity tolerance



*Ectopleura sp.*

**Common name:** Colonial tubular hydroid  
**Diet:** Zooplankton  
**Recruitment:** Summer  
**Others:** attached to rocks and algae

## Class Scyphozoa (Jellies)



*Aurelia aurita*

**Common name:** Moon jelly (polyp stage)  
**Diet:** small invertebrates  
**Recruitment:** Autumn, summer  
**Others:** adults are free-swimming; can tolerate low oxygen concentrations

Find out more: <http://www.marlin.ac.uk>



Co-funded by the  
Erasmus+ Programme  
of the European Union