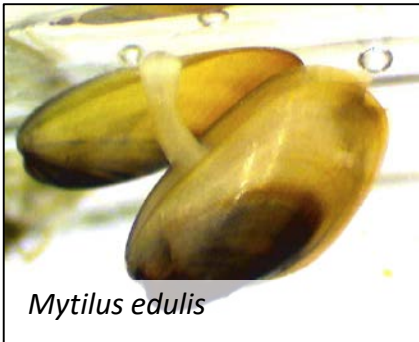


Organisms you may find on the discs: **Mollusca**

Class Pelecypoda (Bivalve molluscs)



Common name: Blue mussel
Diet: Plankton
Recruitment: early to late summer
Others: have high filtering capacity thus sometimes used to improve water quality



Common name: Common cockle
Diet: Plankton, Detritus
Recruitment: early to late summer
Others: Burrows in soft sediments and sand

Class Gastropoda (Sea snails and Sea slugs)



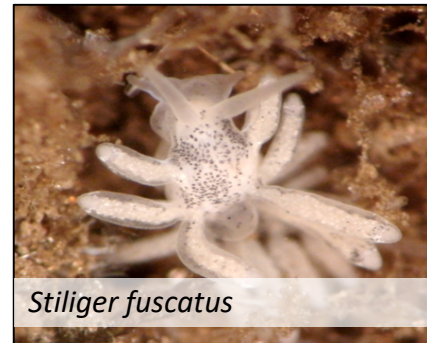
Common name: Common periwinkle
Diet: Diatoms, Seaweeds
Recruitment: spring
Others: also eats dead macroalgae



Common name: Mud snail
Diet: Diatoms, seaweeds, bacteria
Recruitment: early spring
Others: very tiny snails; also eat detritus



Common name: Sea slug
Diet: sponges, hydroid, bryozoans
Recruitment: Summer
Others: some feed on only one kind of prey



Common name: Dusky sea slug
Diet: filamentous Algae
Recruitment: Summer
Others: sap-sucker; pierce algae cell walls and sucks out cell contents